








## Recognizing Community Expertise in Research Partnerships

Leander R. McDonald, PhD  
Vice President of Academics  
Cankdeska Cikana Community College  
Spirit Lake Dakota Nation

**2009 American Indian Health Research Conference**  
**Center for Rural Health**  
**UND School of Medicine & Health Sciences**  
Canad Inns Hotel and Destination Center  
Ambassador Room C  
October 23, 2009


Community Research Education and Tribal Empowerment (CREATE)  
Funded by the ND INBRE  
National Institute of Health Grant P20 RR016471-07

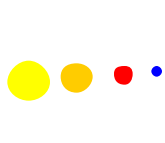


## Cankdeska Cikana (*Little Hoop*) Community College

- Established in 1970, *Little Hoop* is the primary secondary education institute for the Spirit Lake Reservation.
- CCCC is a member of the American Indian Higher Education Consortium comprised of 36 tribal colleges
- CCCC Goals are to:
  - Develop the human resources of the Spirit Lake Tribe necessary to meet the overall workforce needs.
  - Help preserve the Dakota language and Dakota heritage through academic curriculum.
  - Provide the first two years of college education for those students wishing to continue their academic study.
  - And, provide vocational education that allow students a wide range of opportunities both on and off the reservation.
- Website: [www.littlehoop.edu](http://www.littlehoop.edu)

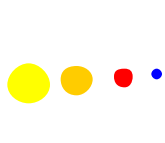
---

McDonald  2



## Center for Rural Health

- Established in 1980, at the University of North Dakota - Grand Forks, ND
- Focuses on access, financing, quality, and information dissemination through:
  - Education, Training, and Awareness
  - Community Development & Technical Assistance
  - Native American Health
  - Rural Health Workforce
  - Rural Health Research
- Web site: <http://ruralhealth.und.edu>

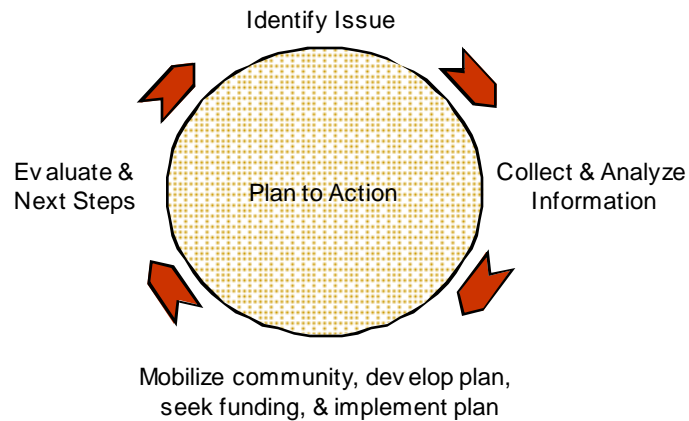


## National Resource Center on Native American Aging

- Established in 1994, at the Center for Rural Health, University of North Dakota School of Medicine and Health Sciences
- Focuses on:
  - Education, Training, and Research
  - Community Development & Technical Assistance
  - Native Elder Health, Workforce, & Policy
- Web site: <http://nrcnaa.org>



## Community Based Planning Model



## What is community data?

- Information specific to a group of people residing in the same area.
- Residents that may share a common background or interest in the community (some tribes have sub communities such as clans).
- Culture, spirituality, economics, and or politics may be factors that define a community or the members.





## Community Data Uses

- Identifies and documents issues that are important for your community
- Documents disparities when comparisons are available
- Provides extensive information for strategic planning
- Enhances advocacy efforts at the tribal, state, and national levels.
- Provides documentation required for planning, policy development, and funding application



## Obtaining Community Level Data

- Community level data is usually obtained in the community, by community researchers, consultants, and/or academic partners.
- According to the Agency for Healthcare Research and Quality, four issues should be considered by researchers when conducting community research:
  - Interaction with the community as partners not just subjects.
  - Use of community knowledge to understand issues and develop interventions.
  - Community involvement in the design and outcomes
  - Immediate benefits from results to participating communities.



## Community Based Research will include:

- A process where interests or issues are locally defined.
- A method by which the nature and extent of needs can be both assessed and documented.
- A basis for planning that is evidence based.



## Native focused research should ensure:

- Tribes retain ownership of the data
  - Data analyses, publication, and/or presentation must be approved by tribal council
- Research is beneficial to the tribe
  - Compensation to participants
  - Research capacity is developed or enhanced
  - Reports are provided to tribal council or research contact person

## Community Needs Assessments

- A process of collecting information
- A basis for locating a community's key interests
- A basis for setting goals
- Documentation for persuading others

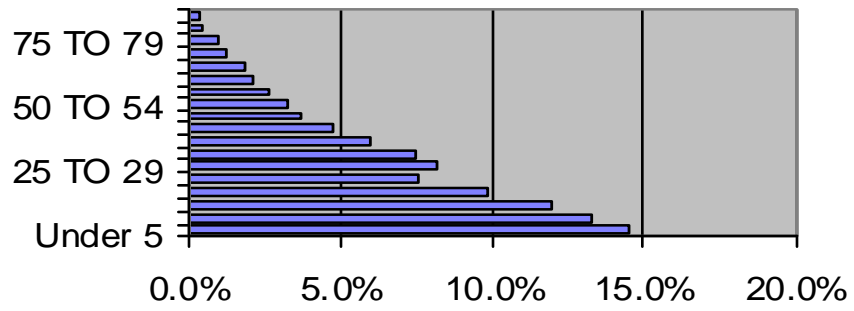


## Sources of Data

- There are many sources of quantitative data
- Qualitative data reports are lacking
- The data must fit the question
- Use multiple sources! - *Triangulation*



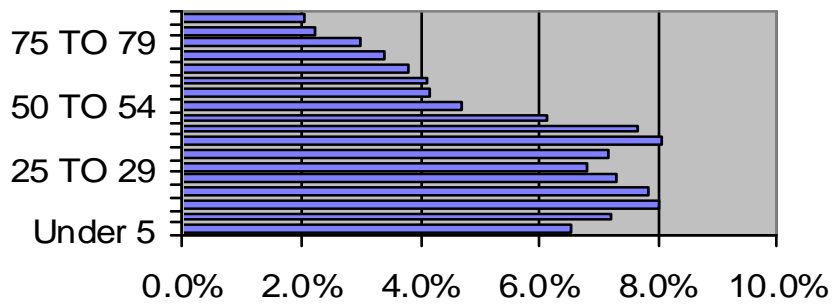
### N.D. Native American Population



Source: North Dakota Data Center



### ND Total Population



Source: North Dakota Data Center





## Community Based Data Examples



## The goal - Objective Data!

- Identifying needs - the presence of objective conditions
  - Incidence or prevalence rates
- Locating how needs translate into “Demand”
  - the proportion of need being presented for services



## ALERT! THE DATA MAY BE UPSETTING!

- High levels of need may be initially rejected
- Low levels of demand when need is high may lead to rejection



## Social Indicators

- Measures that can be taken to represent needs
  - Records of use in programs
  - Participation in health programs
  - Use of services (eg. Dialysis)
  - Others



## Survey data

- Survey data is the method of choice
- Hard data - statistical reports
- Representative of population



## Key Informants

- Talking with people you know are well informed
  - Doctors
  - Administrators
  - Clergy
  - CHRs
  - etc.



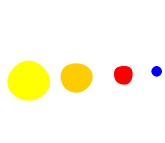
## Focus Groups

- Small groups of 8 to 10 people
- Uses conversations - story telling
- Groups are free to initiate information
- They generate ideas!



## Community Forum

- Very inclusive
- Requires good facilitator(s)
- May use breakout groups - people open up better!
- They generate ideas!



## Provider Profiles

- Accounts for services now provided
- Data from providers
  - availability
  - accessibility
  - affordability
- Use of services (contrast with need)



## National Data Sources

### Census Data

- Data from the 2000 census can be located at
  - [http://factfinder.census.gov/home/aian/sf\\_aian.html](http://factfinder.census.gov/home/aian/sf_aian.html) - this site locates data for each of the 526 tribes online. It is a source for getting a demographic profile of your tribe.
  - For larger groupings containing numerous tribes in a single organization data can be obtained from [http://factfinder.census.gov/home/aian/sf2\\_sf4.html](http://factfinder.census.gov/home/aian/sf2_sf4.html) where findings are based on 39 tribal groupings.
  - The 2000 census data is now several years old and to represent the current year you may want to use current estimates. In order to estimate the population of each state and county, the Census Bureau conducts annual estimates of our population by age and race for each county. Estimates for years between censuses can be found at <http://www.census.gov/popest/estimates.php>, but you might be restricted to obtaining data for counties and not for boundaries that reflect your service areas or reservations.



## State Data Sources (cont...)

### **Census Data Centers**

***Each state also has a Census Data Center. You can contact the North Dakota Data Center (<http://www.ndsu.nodak.edu/sdc>) with special requests for population data for your state and locality. In addition to serving as the central location for demographic statistics for the state, the Census Data Center also receives a wide array of data from state and local sources. Consequently, they are well positioned to address questions about the demographic profile of your service area. Find and use them!***



## Indian Health Service Data

- Indian Health Service Division of Statistics has a variety of publications and is working to add datafile for national and local use.
  - [http://www.ihs.gov/NonMedicalPrograms/IHS\\_stats/index.cfm?module=hqPub&option=index](http://www.ihs.gov/NonMedicalPrograms/IHS_stats/index.cfm?module=hqPub&option=index)



# Intro to Research: ST299



## ST299: Intro to Research

- Regular Course Offering
- 3 credits, Certificate
- Course Focus
  - Research Issues
  - Community Based Participatory Research
  - Qualitative and Quantitative Research
  - Human Subjects Protections (IRB)
  - Cultural Considerations



## Course Objectives

- Passing UND Institutional Review Board Exam
- Understanding Confidentiality & Privacy
- Understanding Ethical Research in American Indian Communities
- Basic Ability to use Excel & SPSS for stats.
- Introduction to PowerPoint presentation and report writing
- Know special considerations for research in AI communities
- Know Dakota & Western perspectives of topic



## Class Structure

- Lecture
- Computer lab
- Hands on approach
- Relevant to Needs of Community
- Report Results to Community



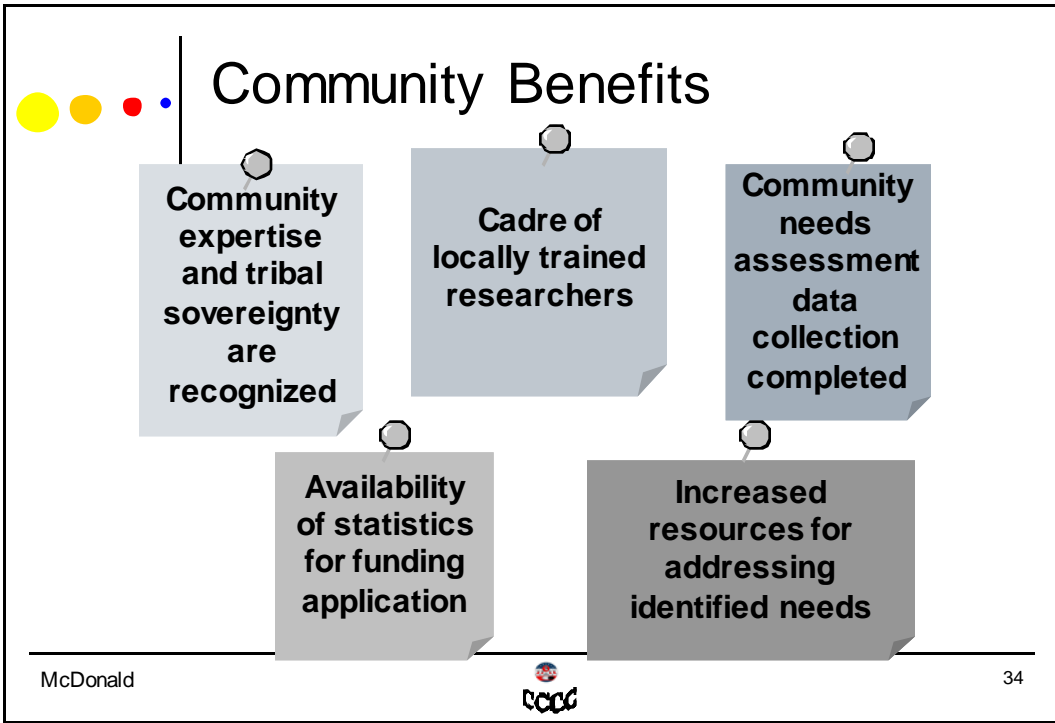
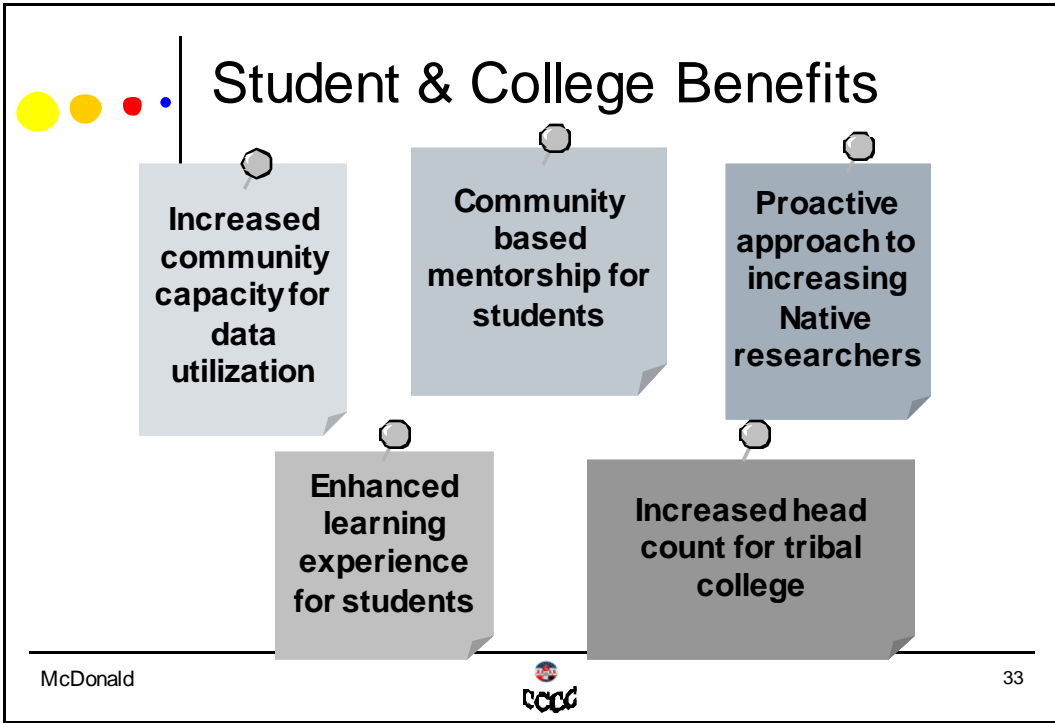
## Student Perspectives

- Increased understanding of research design and application
- Coursework crossover
- Community based mentorship
- Career applications
- Financial incentives for participating



## Educational Outcomes

- Enhancement of:
  - Oral and writing skills
  - Critical Thinking & Problem Solving Skills
  - Argument, facts, solutions, prediction
  - Word processing, spreadsheet, database
  - Ability to enter data & conduct basic analysis
  - Ability to present results (PowerPoint & report writing)





For more information contact:

Leander R. McDonald, PhD  
Vice President of Academic Affairs  
Cankdeska Cikana Community College  
PO Box 269  
Fort Totten, ND 58335-0369  
Tel: (701) 766-1133  
Fax: (701) 766-4077  
Email: [leander\\_mcdonald@littlehoop.edu](mailto:leander_mcdonald@littlehoop.edu)

