



## Developing Research Capacity for Tribal Communities



Native American Research Conference on Health  
Portland, OR  
August 28, 2008

Jacque Gray, PhD  
Leander R. McDonald, PhD

*Spirit Lake Demographic and Mental Health Pilot Project*  
Funded by the ND INBRE  
National Institute of Health Grant: P20RR016471-07



## Cankdeska Cikana (*Little Hoop*) Community College

- Established in 1970, *Little Hoop* is the primary secondary education institute for the Spirit Lake Reservation.
- CCCC is a member of the American Indian Higher Education Consortium comprised of 36 tribal colleges
- CCCC Goals are to:
  - Develop the human resources of the Spirit Lake Tribe necessary to meet the overall workforce needs.
  - Help preserve the Dakota language and Dakota heritage through academic curriculum.
  - Provide the first two years of college education for those students wishing to continue their academic study.
  - And, provide vocational education that allow students a wide range of opportunities both on and off the reservation.
- Website: [www.littlehoop.edu](http://www.littlehoop.edu)



## Center for Rural Health

- Established in 1980, at the University of North Dakota - Grand Forks, ND
- Focuses on access, financing, quality, and information dissemination through:
  - Education, Training, and Awareness
  - Community Development & Technical Assistance
  - Native American Health
  - Rural Health Workforce
  - Rural Health Research
- Web site: <http://ruralhealth.und.edu>

## What is community data?

- Information specific to a group of people residing in the same area.
- Residents that may share a common background or interest in the community (some tribes have sub communities such as clans).
- Culture, spirituality, economics, and or politics may be factors that define a community or the members.



## Community Data Uses

- Identifies and documents issues that are important for your community
- Assists in documenting disparities for your community
- Assists in providing extensive information for strategic planning
- Provides essential information for advocacy efforts at the tribal, state, and national levels.
- Provides documentation required for planning, policy development, and funding application



## Obtaining Community Level Data

- Community level data is usually obtained in the community, by a researcher, consultant, or academic partner.
- According to the Agency for Healthcare Research and Quality, four issues should be considered by researchers when conducting community research:
  - Interaction with the community as partners not just subjects.
  - Use of community knowledge to understand issues and develop interventions.
  - Community involvement in the design and outcomes
  - Immediate benefits from results to participating communities.



## Intro to Research: ST101



## ST101: Intro to Research

- Intensive (1 week)
- 48 hours, 3 credits, Certificate
- Course Focus
  - Research Issues
  - Community Based Participatory Research
  - Qualitative and Quantitative Research
  - Human Subjects Protections (IRB)
  - Cultural Considerations



## Course Objectives

- Passing UND Institutional Review Board Exam
- Understanding Confidentiality & Privacy
- Understanding Ethical Research in American Indian Communities
- Basic Ability to use Excel & SPSS for stats.
- Introduction to PowerPoint presentation and report writing
- Know special considerations for research in AI communities
- Know Dakota & Western perspectives of topic



## Schedule – Day 1

- Opening Prayer
- Introductions
- Research History & Ethics
- Potential Harms of Research
- Quantitative Research Methods
- Assignment
- Reflection Paper



## Schedule – Day 2

- Opening Prayer
- Turn in Reflection Paper
- Review of Ideas in Reflection Papers
- Qualitative Research Methods
- SPSS Lab
- Assignment
- SPSS Assignment



## Schedule – Day 3

- Opening prayer
- Turn in SPSS Assignment
- Data Usage
- Informed Consent
- Confidentiality
- IRB Training
- Assignment
- IRB Exam (open notes)



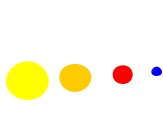
## Schedule – Day 4

- Opening prayer
- Review IRB Exam
- MS Excel Lab
- Qualitative Research Methods
- Facilitation Skills
- Focus Groups (didactic & experiential)
- Assignment
- Excel Assignment



## Schedule – Day 5

- Opening prayer
- Excel Assignment Due
- Dakota Cultural Perspective on Mental Health
- Western Cultural Perspective on Mental Health
- Research Design Exercise
- Wrap Up



## Class Structure

- Lecture
- Computer lab
- Hands on approach
- Relevant to Needs of Community
- Supervision by Spirit Lake Planning
- Report Results to Community



## Practicum ST:299

- Phase I: Data collection
  - 7 students
  - Stipend paid per survey
  - Canvassing of Spirit Lake Reservation
  - Bi-weekly debriefing
  - Phase I completed
- Phase II: Data collection
  - 3 students continued
  - 4 Planning staff
  - Projected completion date: June 20, 2008



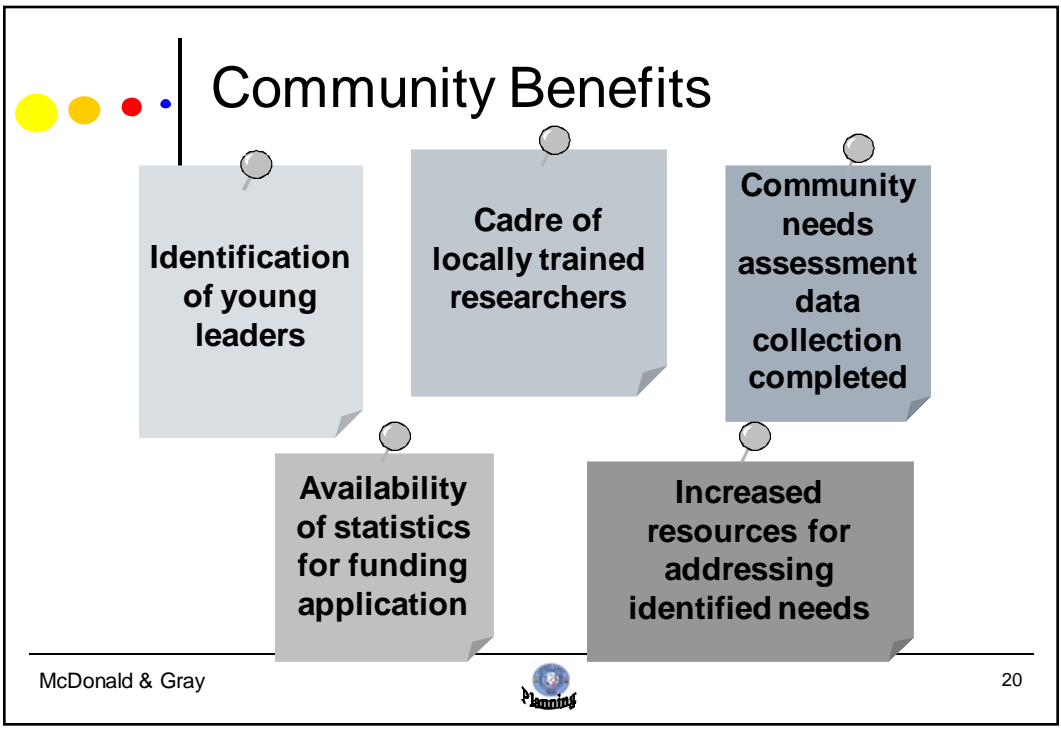
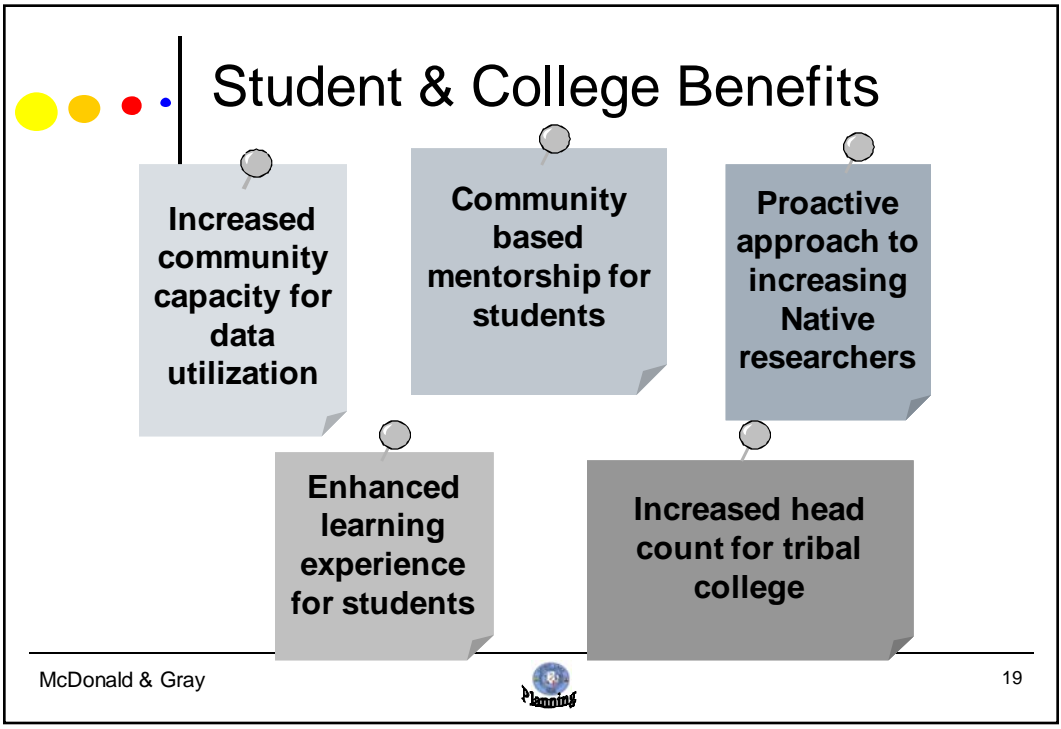
## Student Perspectives

- Increased understanding of research design and application
- Coursework crossover
- Community based mentorship
- Career applications
- Financial incentives for participating



## Educational Outcomes

- Enhancement of:
  - Oral and writing skills
  - Critical Thinking & Problem Solving Skills
  - Argument, facts, solutions, prediction
  - Word processing, spreadsheet, database
  - Ability to enter data & conduct basic analysis
  - Ability to present results (PowerPoint & report writing)





For more information contact:  
Jacqueline S. Gray, PhD  
Leander R. McDonald, PhD  
Center for Rural Health  
University of North Dakota  
School of Medicine and Health Sciences  
501 N. Columbia, Stop 9037  
Grand Forks, ND 58202-9037

Tel: (701) 777-3848

Fax: (701) 777-6779

<http://ruralhealth.und.edu/>

