

## Session 2

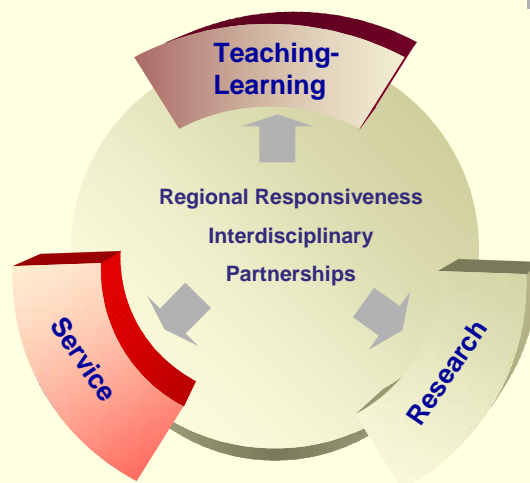
### Focus on Education

### Extending the Reach

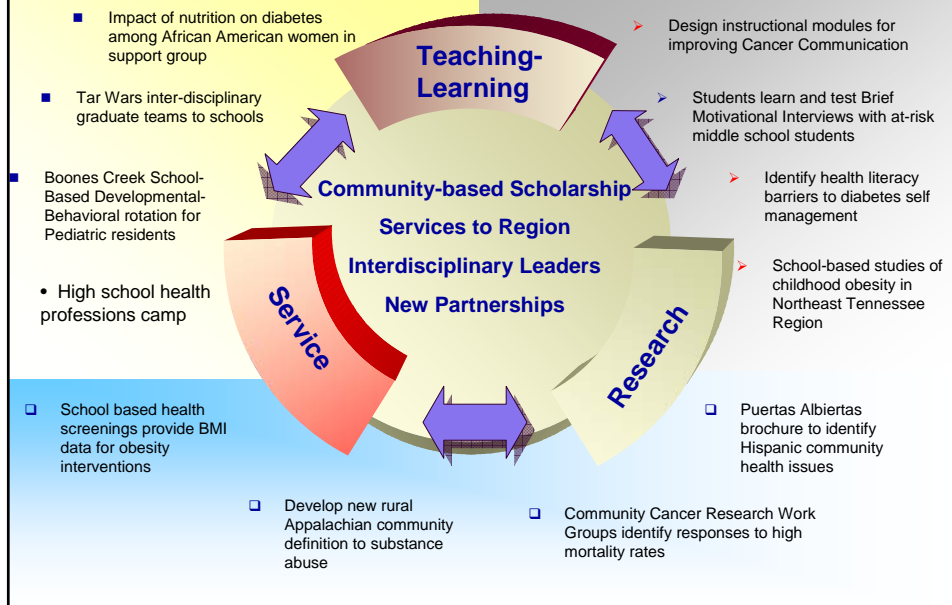
#### ETSU approach

Mission driven  
Community-based education  
Blending teach/learning, service and research

## Infusing ETSU Values into Traditional Missions



## Outcomes of ETSU Approach with Rural Issues



## ETSU philosophy

Getting university health professions students into rural communities promotes interest among rural students in health professions careers

# ETSU Mission/ Institutional Purpose

*University pursues partnerships...*

*... emphasis on community based  
and interdisciplinary education*

*...special emphasis on addressing the  
needs of Southern Appalachia  
in the area of rural health care*

## Opportunities to Extend the Reach

- School presentations about organs during third year medical student clerkship Rural Health Fairs
- Spring Diabetes education experiences through Burdick Rural Interdisciplinary Training Program
- School sports physicals by Rural Track students
- Break Free from TV childhood obesity interventions
- Brief motivational interviews as part of NIAAA study of substance use in rural Appalachian middle schools

