



Improving Colorectal Cancer Screening Rates in North Dakota

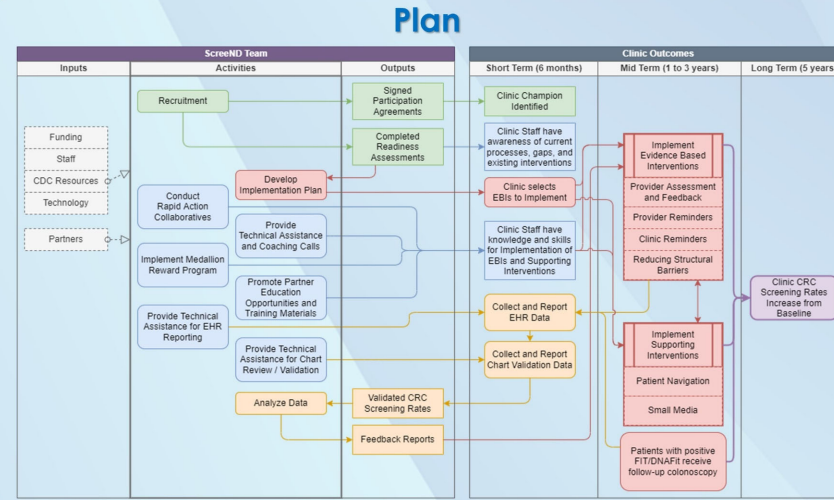


Quality Health Associates
of North Dakota

Colorectal cancer is the...

2ND MOST DIAGNOSED CANCER
AND
LEADING CAUSE OF CANCER-RELATED DEATHS
(among cancers that affect both men and women)
in North Dakota.

Despite strong evidence of their effectiveness, stool tests for CRC screening are underused. Through a grant from the Centers for Disease Control and Prevention, Quality Health Associates of North Dakota (QHA) is partnering with primary care clinics in ND to increase CRC screening rates for rural, frontier and Native American populations. These efforts will work to reduce the incidence and late-stage diagnosis of colorectal cancer, increase the number of lives saved, and potentially impact 6,500 ND residents who have not been screened for CRC.



Act

- Development of a Rapid Action Collaborative where cohorts could share barriers and develop solutions on specific topics.
- Peer-to-peer education for providers
- Epic users webinar to demonstrate data tools
- Monthly TA calls
- Development of an annual survey and report
- CRC Awareness Month Social Media Toolkit
- External Evaluation Team, meets semi-annually

Results



Overall CRC screening rate improvement



additional patients with up-to-date CRC screening

Participants

Cohort 1

Quentin N. Burdick Memorial
Spirit Lake Health Center
Standing Rock Service Unit

Cohort 2

First Care Health Center
CliniCare
Townner County Medical Center
UND Family Practice

Cohort 3

South Central Health Clinics
Jacobsen Memorial Clinics
Southwest Health Care

Cohort 4

Now Recruiting!

Do

ScreenND Clinics implement the following:

Provider Interventions

- ✓ Reminders/recall systems
- ✓ Assessment/feedback
- ✓ Improved recommendation to patient

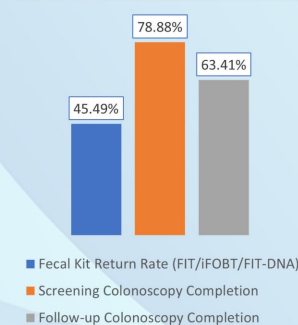
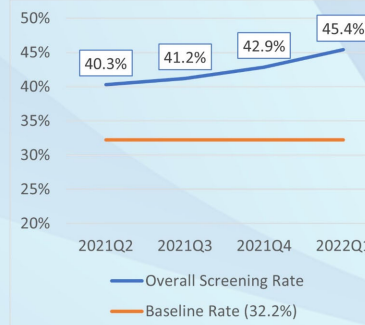
System Interventions

- ✓ Policy development
- ✓ Reducing structural barriers
- ✓ Measuring practice progress

Patient Interventions

- ✓ Client reminders
- ✓ Screening test tracking and follow-up
- ✓ Small media
- ✓ Patient navigation

Study



Our Team

Judy Beck, MSN, RN
Program Director

Nikki Medalen, MSN, BSN
Quality Improvement Specialist

Jonathan Gardner
Data Manager

Nathan Brintnell
Data Analyst

Geneal Roth
Communications Coordinator

Acknowledgement

Sincere appreciation to **Exact Sciences** for their tremendous support and collaboration.