



2023 Dakota Conference on Rural and Public Health

Healthy and Safe Communities Section

Kim Mertz, Section Director

Community Engagement Unit

Krissie Guerard, Unit Director



Public Health Division | June 14, 2023

1



2

Healthy and Safe Communities Programs - Making a Difference in North Dakotan's Lives!



Family Health and Wellness

Increased state investment for domestic violence and sexual assault services and prevention
 Fatherhood Survey coming soon!



Health Promotion and Chronic Disease Prevention

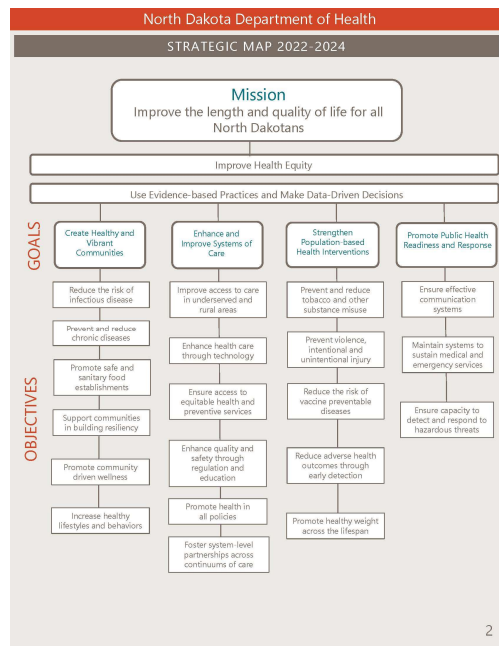
State funding for youth vaping prevention and pharmacy tobacco treatment programs



Special Health Services

Promotes a system of care and services that improves the health and well-being of individuals with special health care needs and their families

3



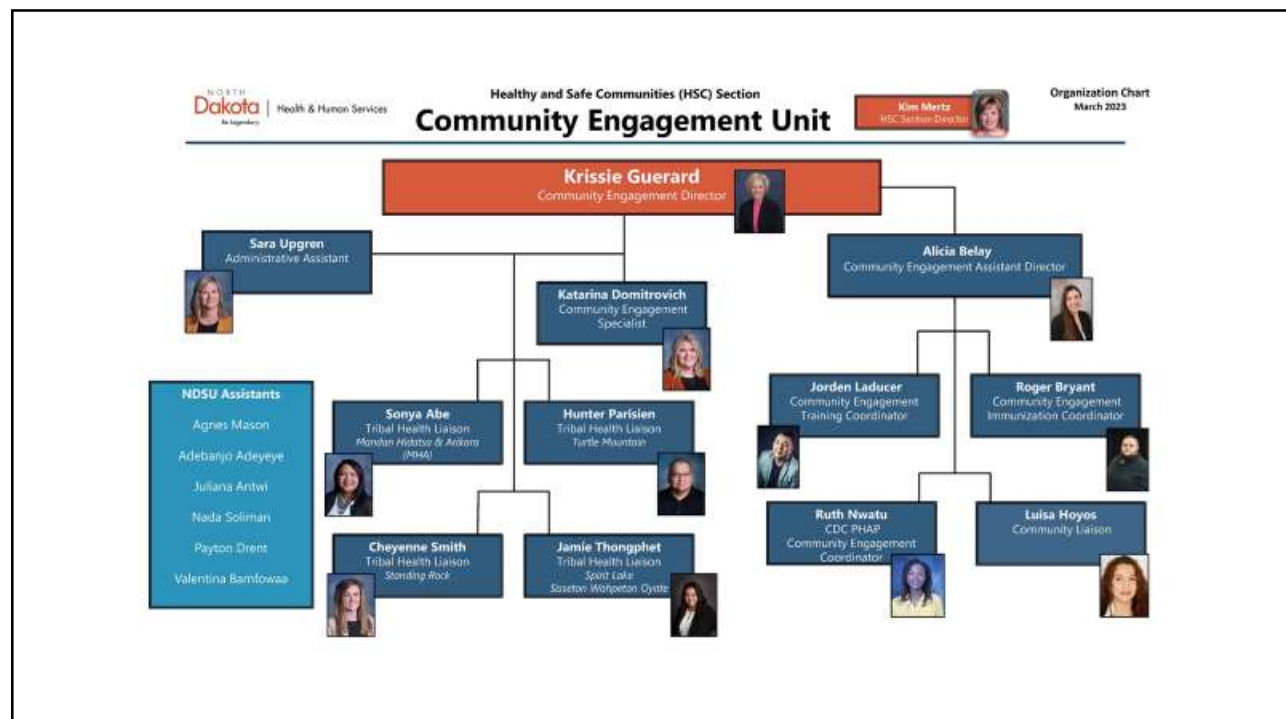
4

Community Engagement Unit

The mission of the Community Engagement Unit is to understand and reduce health disparities among all North Dakotans. The primary goal is to work alongside North Dakota communities in addressing health-related needs to reduce disease rates by providing opportunities for interventions and improving access to health care.

This will ensure that all North Dakotans have the ability to reach their optimal health.

5



6

HHS Advisory Boards

New American/Foreign
Born/Immigrant (NFI)



- The NFI Advisory Board members represent a diverse cross-section of individuals and organizations with a tie to NFI communities

BeYOU LGBTQ2s



- 18+
- Ally, provider and/or members of the LGBTQ2S+ community

Youth (YAB)



- 15-21 years old
- Provide insight-ensuring youth perspectives are incorporated in planning and decisions for the state, as well as forming community partnerships

Tribal Health



- Led by NDSU American Indian Public Health Resource Center

North Dakota | Health & Human Services
Be legendary.

7

Projects

Health Equity Training Series



Ambassador Program



"Not all individuals have a car or money to go to a blood donation site. It was great to host an event that benefited the community (with the huge blood shortage) and individuals on campus to have an easy and convenient opportunity to donate blood if they so wished."

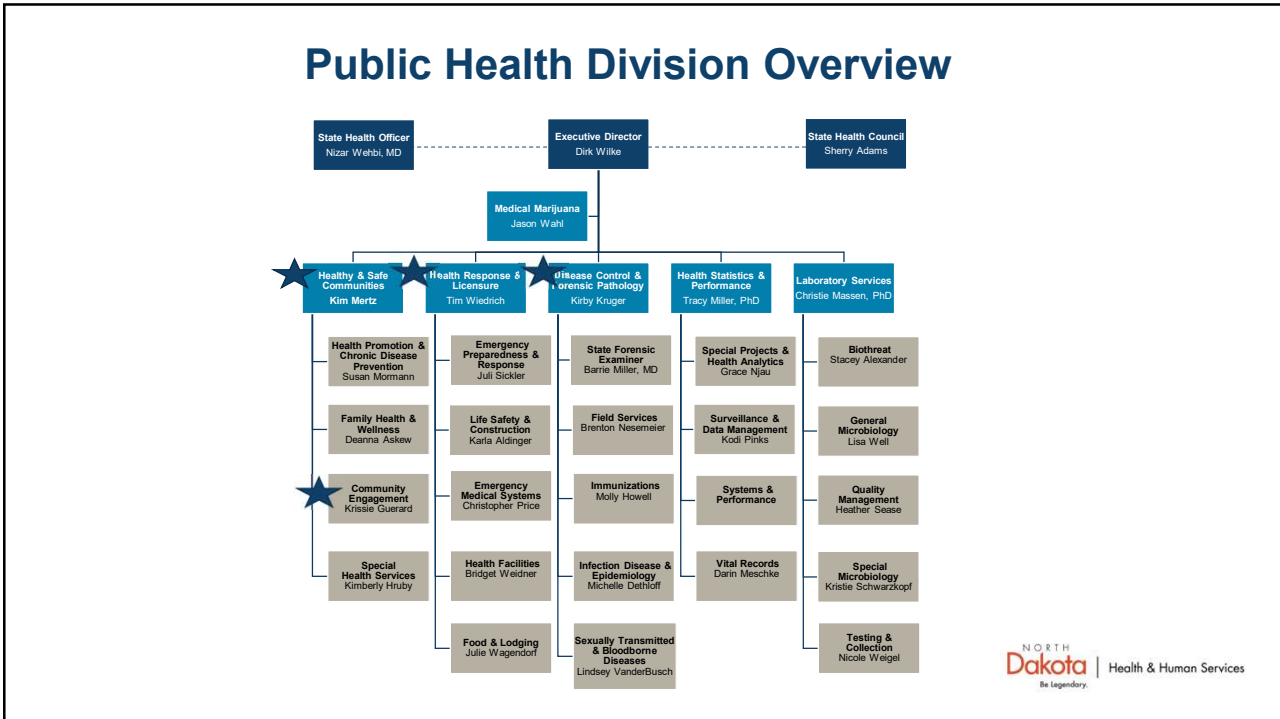
- Shaena Richard, Health Equity Ambassador

8

And so much more!

NORTH
Dakota | Health & Human Services
Be Legendary.

9



10



THANK YOU

Kim Mertz | Healthy and Safe Communities Section Director | kmertz@nd.gov | 328-4528

Krissie Guerard | Community Engagement Unit Director | kguerard@nd.gov | 328-4538