



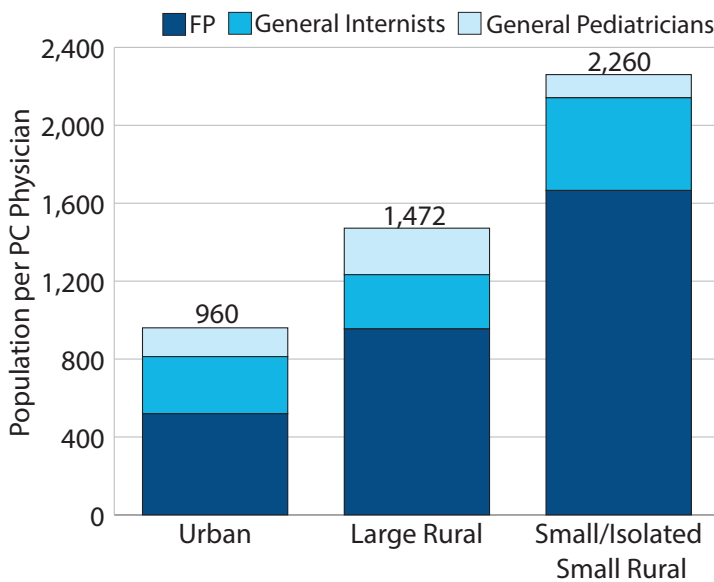
## Demographics of Primary Care Physicians in North Dakota

This fact sheet is Number 36 in a series of analyses regarding physicians in North Dakota. It was developed using 2015 data from the American Medical Association Physician Masterfile.

Primary care physicians are defined as those practicing in family/general practice (FP), general internal medicine (GIM), and general pediatrics (Gen Ped).

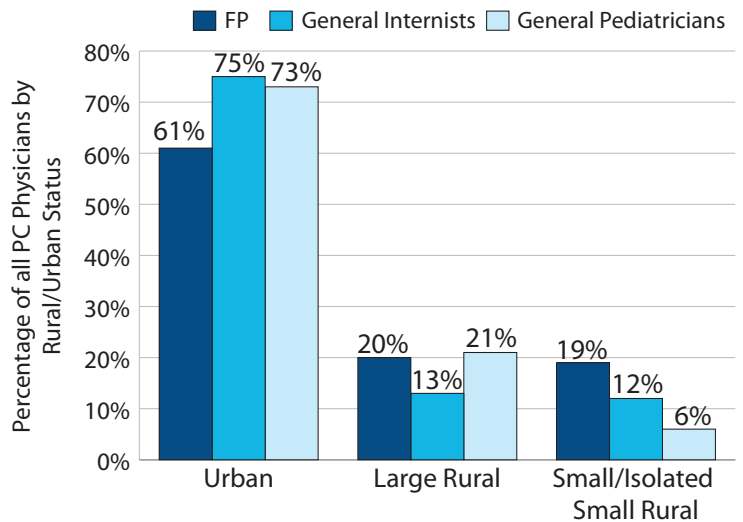
In 2015, there were 609 active primary care physicians in North Dakota. Of these physicians, 403 (66%) practiced in urban areas, 111 (18%) in large rural areas, 35 (6%) in small rural areas, and 60 (10%) in isolated small rural areas. There were 206 primary care physicians in all rural areas combined, which represented 34% of all primary care physicians in North Dakota.

**Figure 1. Comparison of Percentage of Primary Care Physicians Associated by Rural/Urban Status of North Dakota Population**



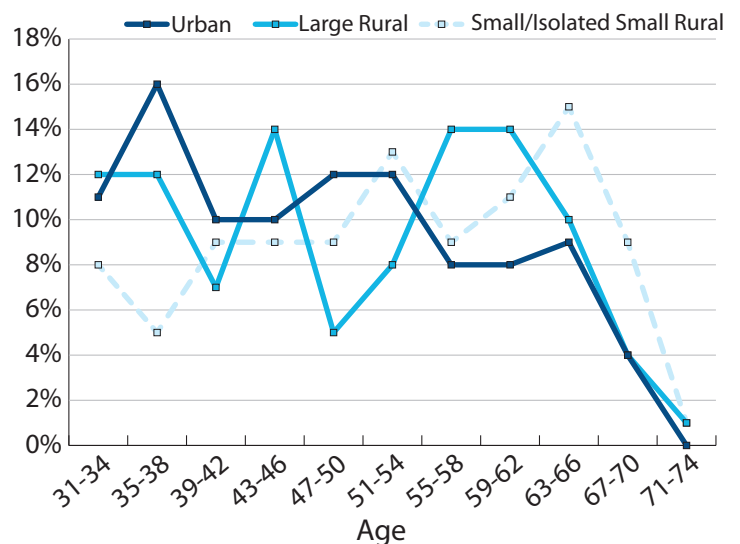
- There are more than twice as many patients per primary care physician in small/isolated small rural areas compared to urban areas.
- The largest absolute difference is for small/isolated small rural versus urban family practice physicians per population (1,146) (not shown in Figure).

**Figure 2. Percentage of Primary Care Physicians in North Dakota by Specialty and Rural/Urban Status**

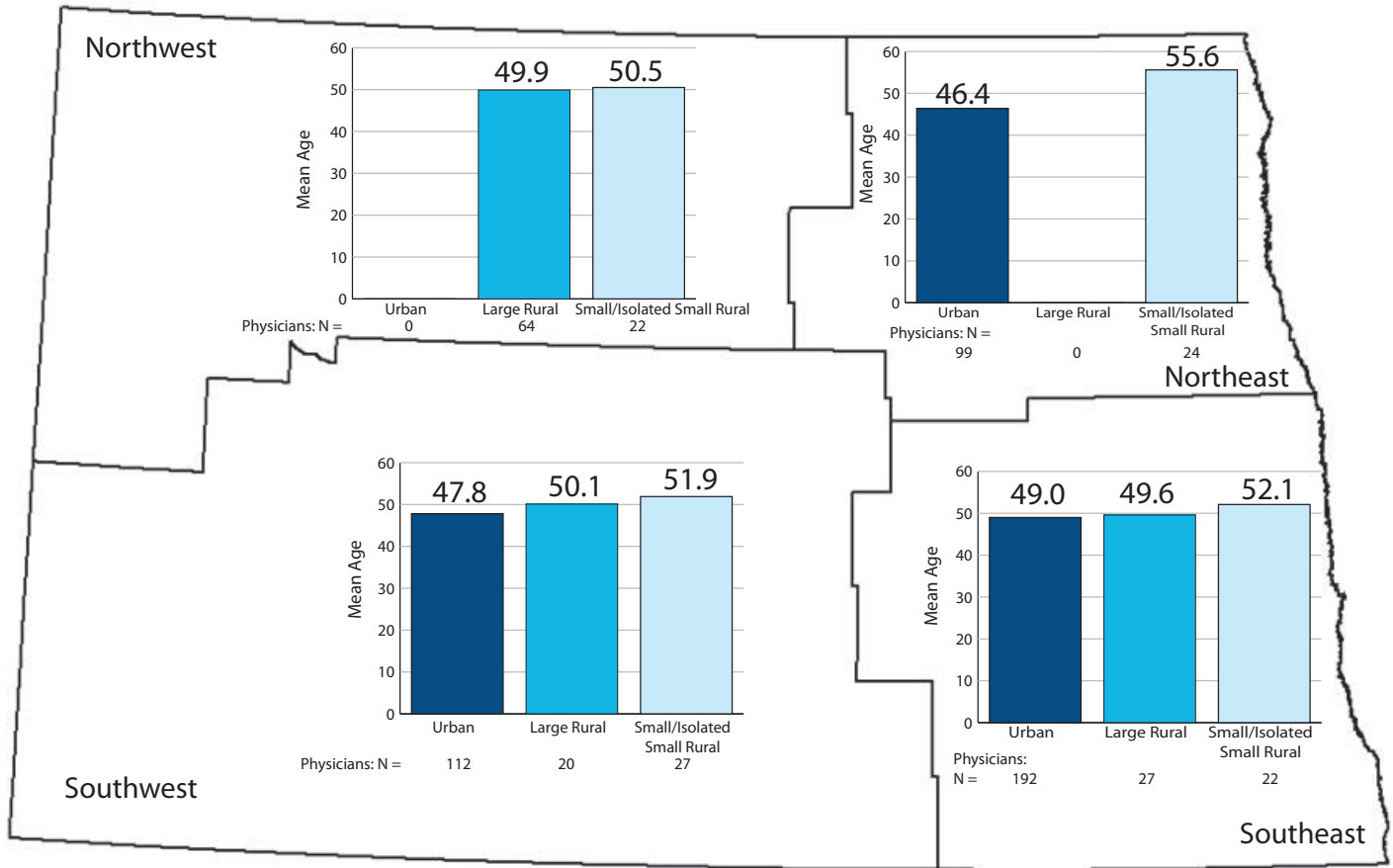


- General internal medicine and general pediatric primary care physicians are more likely to practice in urban areas (75% and 73%) than FP physicians (61%).
- FP primary care physicians are more likely to be practicing in isolated small rural areas than are general internal medicine and general pediatric physicians.

**Figure 3. North Dakota Primary Care Physicians by Age and Rural/Urban Status**



**Figure 4. Average Age of Primary Care Physicians for Rural/Urban Status within Four Regions of North Dakota**



## Conclusions

- Primary care physicians in small/isolated small rural areas are older than elsewhere in the state (Figure 3).
- The highest mean ages for primary care physicians are in small/isolated small rural areas of northeast and southeast North Dakota (Figure 4).
- Primary care physicians average the youngest (46.4) in northeast North Dakota urban areas (i.e., Grand Forks).
- More than two-thirds (66%) of North Dakota’s primary care physicians practice in urban areas.
- Family practice physicians are more likely to work in small/isolated small rural areas.

## Data

The physician data are from the 2015 American Medical Association Physician Masterfile.

**North Dakota Workforce Fact Sheets Are Available At:**

[ruralhealth.und.edu/publications/health-workforce-factsheets](http://ruralhealth.und.edu/publications/health-workforce-factsheets)

**For more information, contact**

**Gary Hart, PhD**

701.777.3848 • [gary.hart@med.und.edu](mailto:gary.hart@med.und.edu)

**Robin Besse, PhD**

701.777.4499 • [robin.besse@med.und.edu](mailto:robin.besse@med.und.edu)

**Mandi-Leigh Peterson, MA**

701.777.6719 • [mandi.leigh.peterson@med.und.edu](mailto:mandi.leigh.peterson@med.und.edu)

**Center for Rural Health**

University of North Dakota

School of Medicine & Health Sciences

1301 North Columbia Road, Stop 9037, Suite E231

Grand Forks, ND 58202-9037

701.777.3848

[ruralhealth.und.edu](http://ruralhealth.und.edu)