



Characteristics of U.S. and International Medical Graduates in Primary Care Physicians in North Dakota

This fact sheet is Number 37 in a series of analyses regarding physicians in North Dakota. It was developed using 2015 data from the American Medical Association Physician Masterfile.

Currently there are 609 physicians practicing primary care in North Dakota; 450 are United States or Canada Medical Graduates (USMGs), and 159 are International Medical Graduates (IMGs) (Figure 1). Nationally, about 10% of IMGs were born in the United States. Primary care physicians are defined as those practicing in family/general practice (FP), general internal medicine (GIM), and general pediatrics (Gen Ped).

The locations where the IMGs received their medical degrees are shown in Figure 2. Most IMGs practicing in North Dakota are from southern and southeast Asia (60%). The top three source countries are India (31%), Philippines (11%), and Pakistan (8%).

Figure 1. Physicians in North Dakota Who Are IMGs

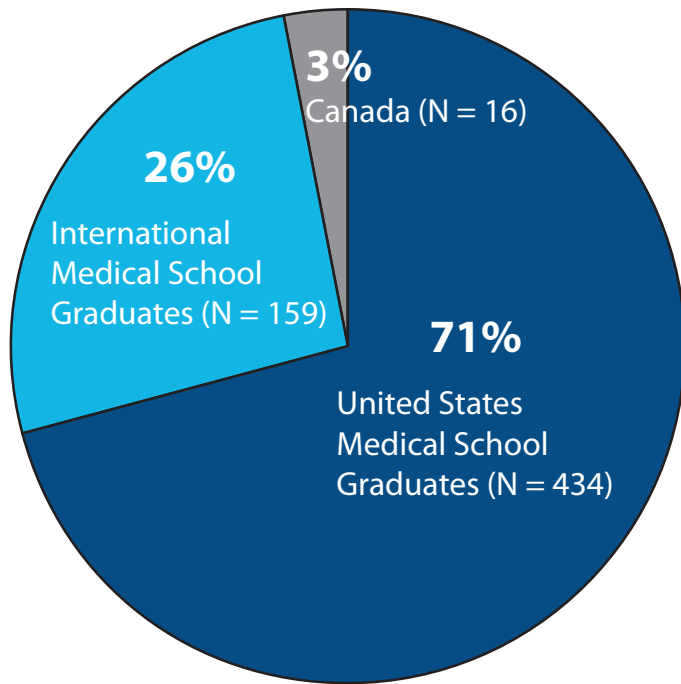


Figure 2. Country of Medical School Graduation for IMG Physicians Practicing in North Dakota

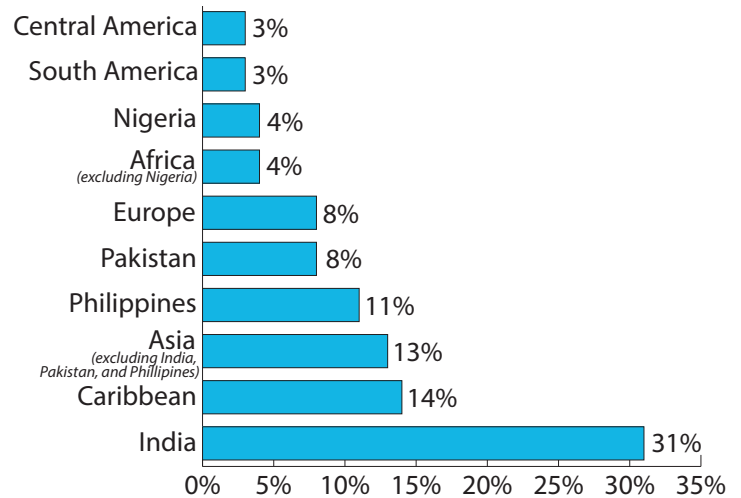
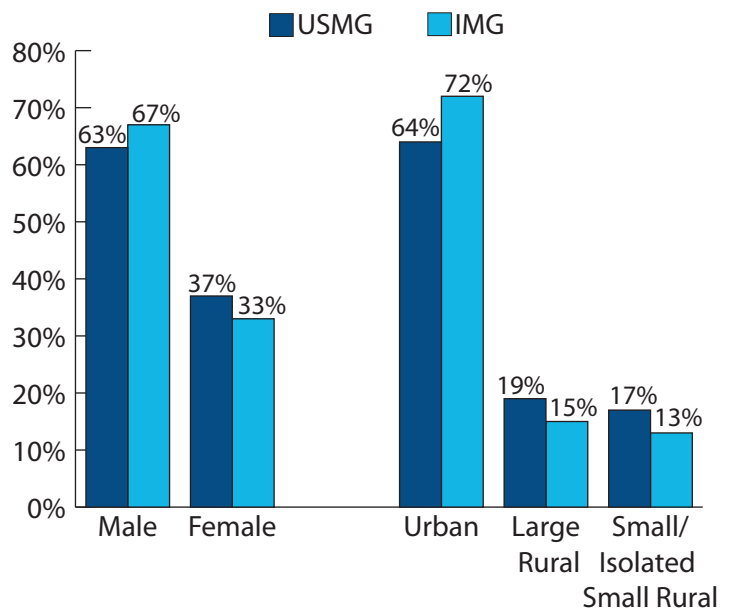


Figure 3. Sex and Rural/Urban Status of USMG and IMG Primary Care Physicians



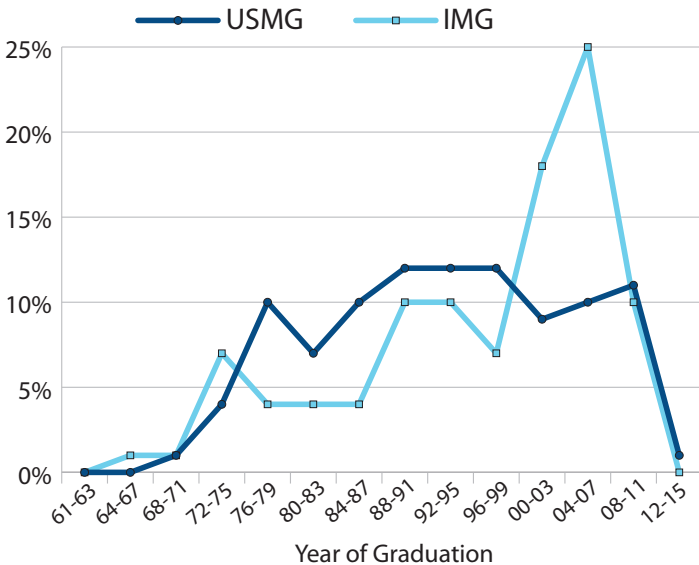
- IMG primary care physicians are more likely than USMGs to be male.
- IMG primary care physicians are slightly less likely to practice in rural areas than USMGs.

Table 1. Primary Care USMG/IMG Status by Specialty and Rural/Urban Status

	FP		GIM		Gen Ped	
	N	%	N	%	N	%
Urban						
USMG	174	60%	63	22%	51	18%
IMG	44	38%	60	52%	11	10%
Large Rural						
USMG	59	68%	13	15%	15	17%
IMG	13	54%	8	33%	3	13%
Sm/Iso Sm Rural						
USMG	55	73%	15	20%	5	7%
IMG	15	75%	5	25%	0	0%
Total						
USMG	288	64%	91	20%	71	16%
IMG	72	45%	73	46%	14	9%

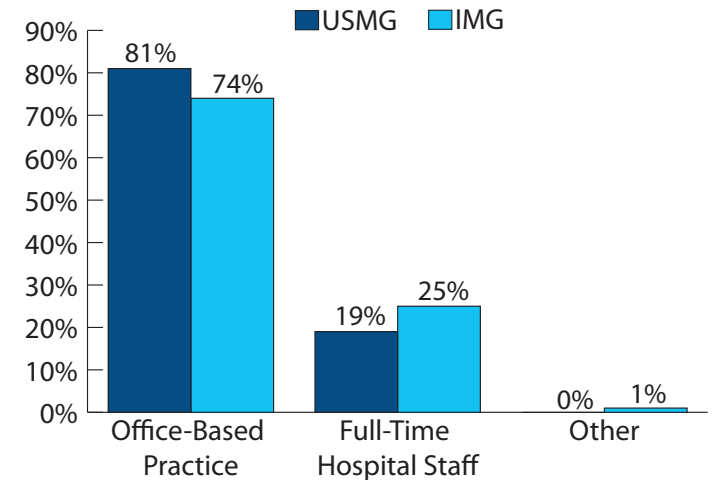
- IMGs are more likely to practice in general internal medicine than USMGs.
- IMGs are more likely to practice as FPs in small/isolated small rural areas than urban and large rural areas.

Figure 4. Year of Graduation for Primary Care Physicians by IMG and USMG Status



- IMG primary care physicians are more likely to have graduated from medical school more recently (1988 or later) than USMGs.

Figure 5. Type of Practice of Primary Care Physicians by IMG and USMG



- IMG primary care physicians are less likely to work in office-based practices than USMGs and more likely to work in hospital-based practices.

Conclusions

Primary care IMGs represent a quarter of primary care physicians in North Dakota. The IMGs are mostly from Asia, are more likely to be male, and are less likely to practice in rural areas. They are more likely to be general internal medicine physicians than family practice physicians and are more likely than USMGs to practice in hospitals.

Data

The physician data are from the 2015 American Medical Association Physician Masterfile.

North Dakota Workforce Fact Sheets Are Available At:

ruralhealth.und.edu/publications/health-workforce-factsheets

For more information, contact

Gary Hart, PhD

701.777.3848 • gary.hart@med.und.edu

Robin Besse, PhD

701.777.4499 • robin.besse@med.und.edu

Mandi-Leigh Peterson, MA

701.777.6719 • mandi.leigh.peterson@med.und.edu

Center for Rural Health

University of North Dakota

School of Medicine & Health Sciences

1301 North Columbia Road, Stop 9037, Suite E231

Grand Forks, ND 58202-9037

701.777.3848

ruralhealth.und.edu

